

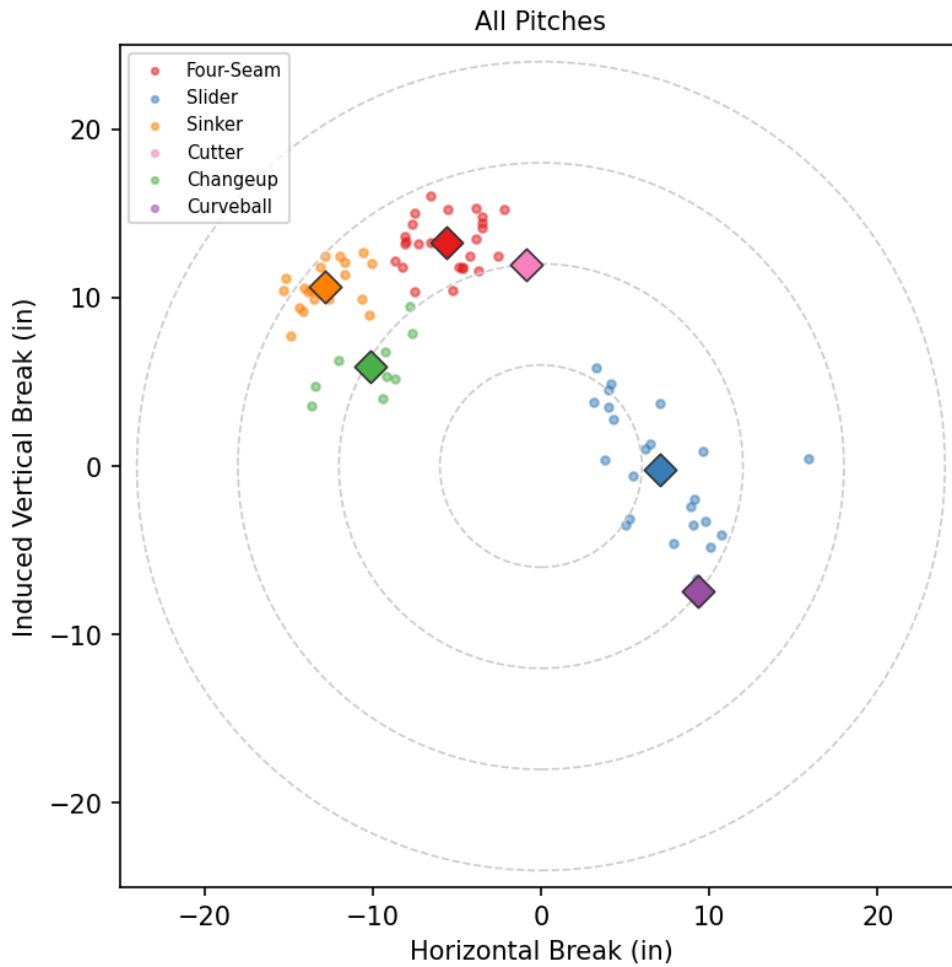
Justus Sheffield

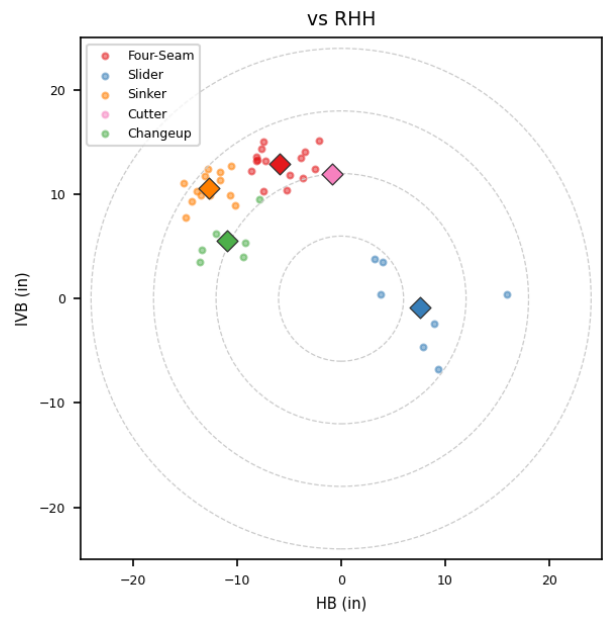
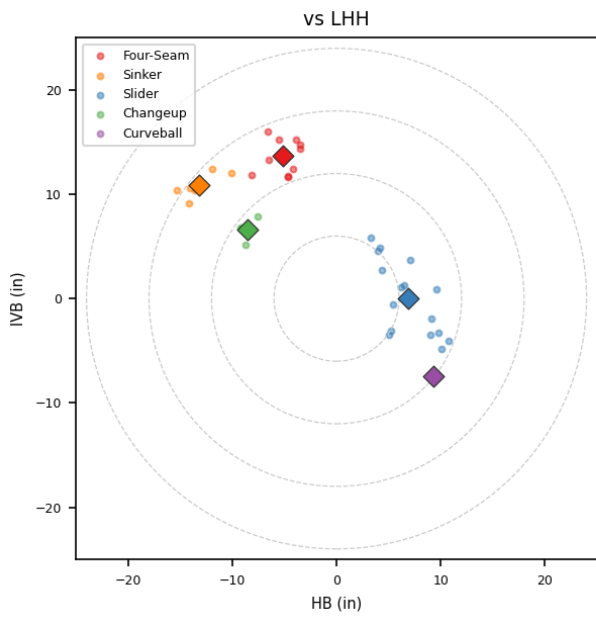
SUL_MON | Left | 2026-04-16 to 2026-04-22

Pitching Profile

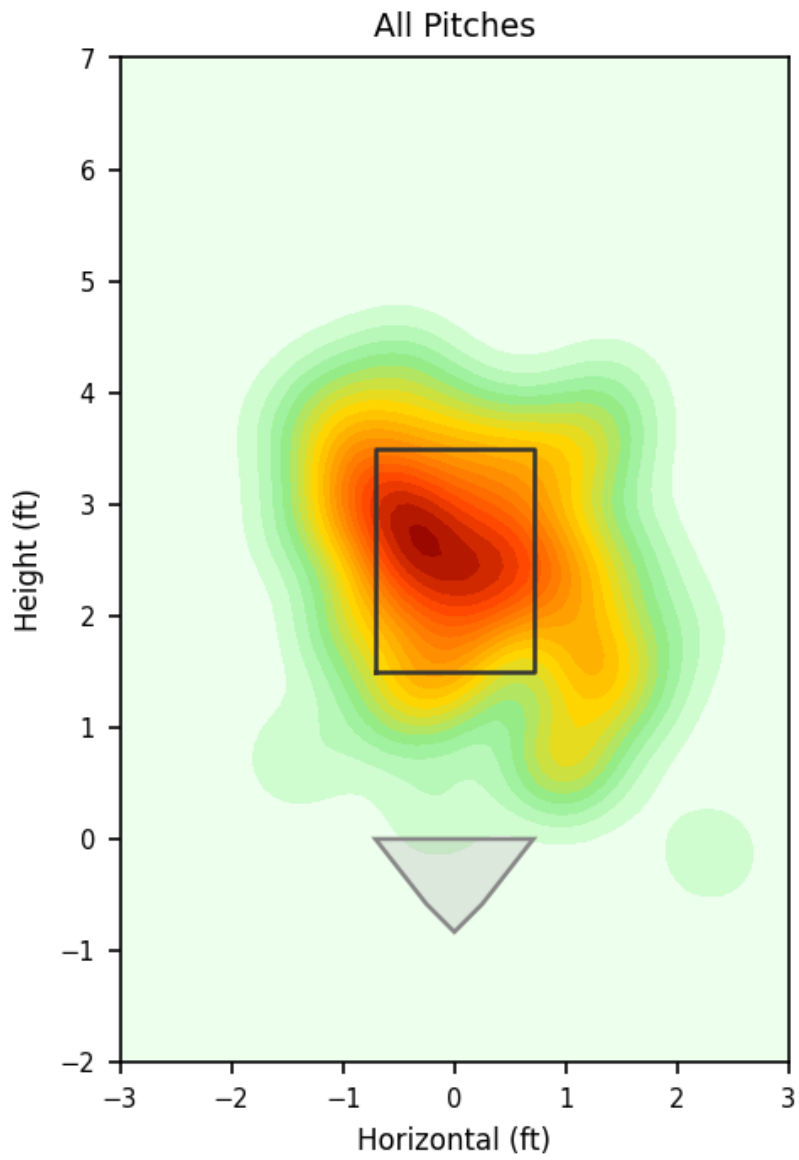
Pitch Type	Count	%	Avg Velo	Max Velo	Avg Spin	IVB	HB	Ext	Whiff%
Four-Seam	25	32.1%	90.9	91.9	2122.0	13.3	-5.6	6.2	28.6%
Slider	23	29.5%	84.1	88.3	2504.0	-0.2	7.1	5.5	50.0%
Sinker	19	24.4%	90.7	92.1	2115.0	10.7	-12.8	6.2	20.0%
Changeup	9	11.5%	85.2	86.7	1807.0	5.9	-10.1	5.7	33.3%
Curveball	1	1.3%	81.0	81.0	2719.0	-7.4	9.3	5.2	100.0%
Cutter	1	1.3%	89.1	89.1	1973.0	11.9	-0.9	6.1	-

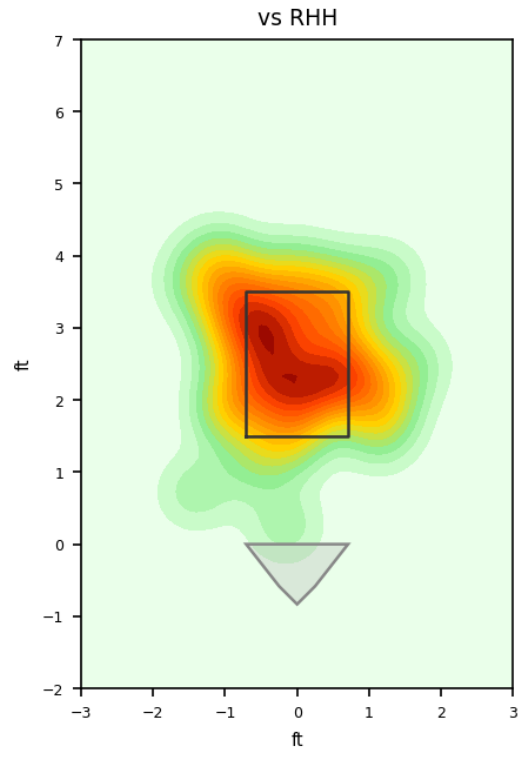
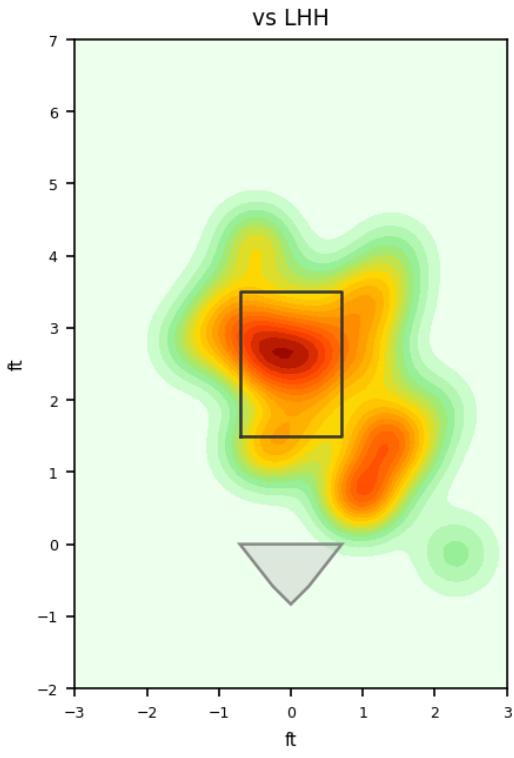
Movement Profile



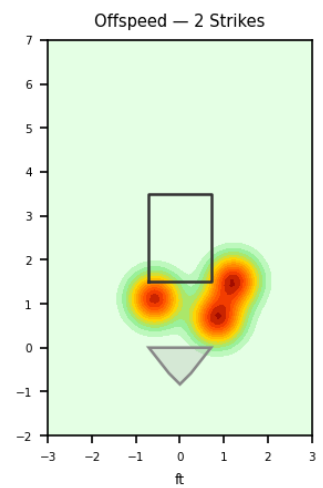
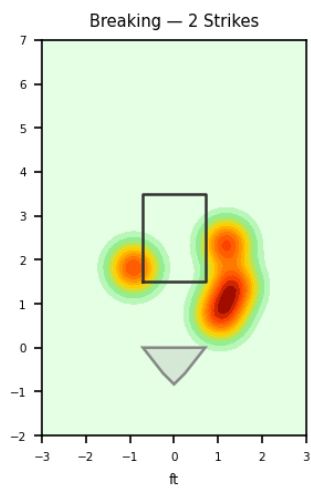
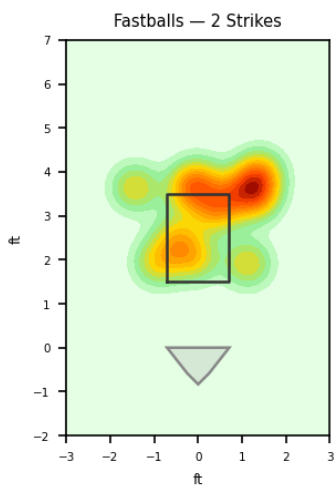
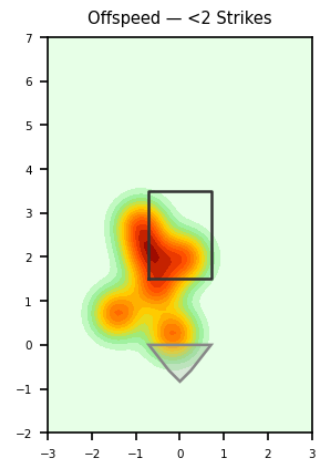
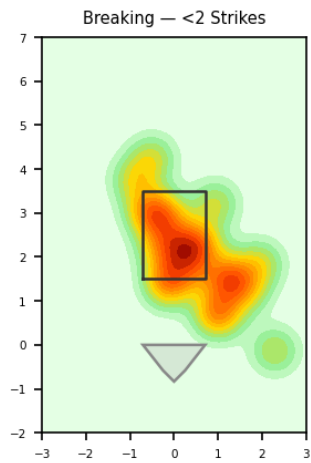
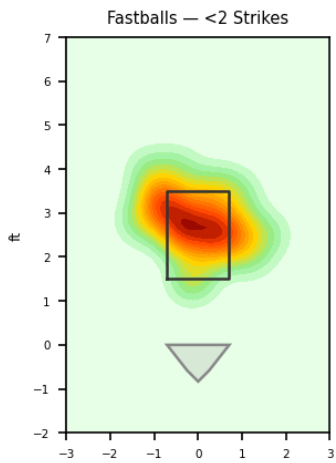


Location Density

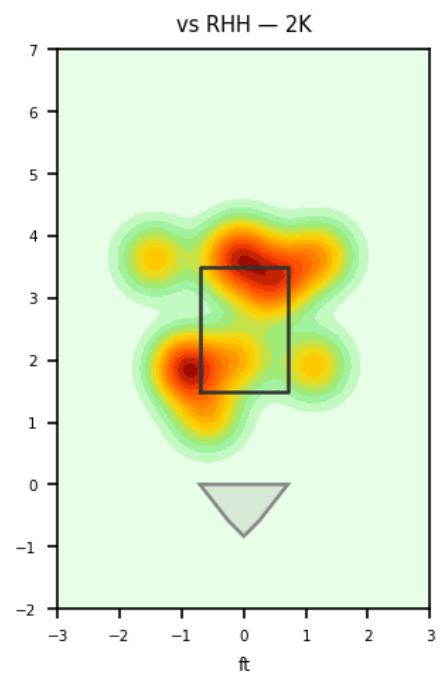
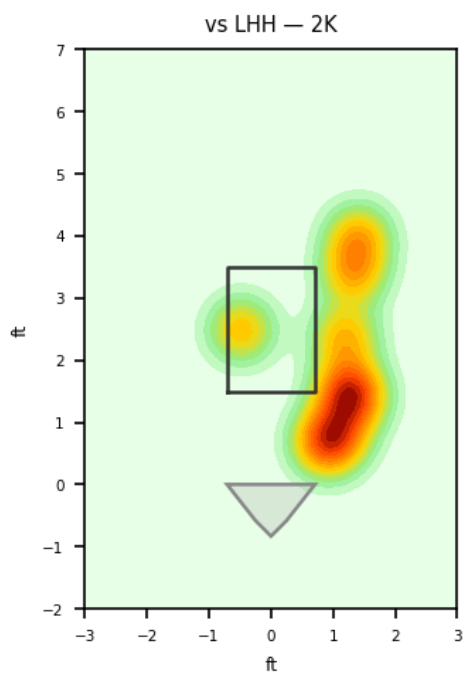
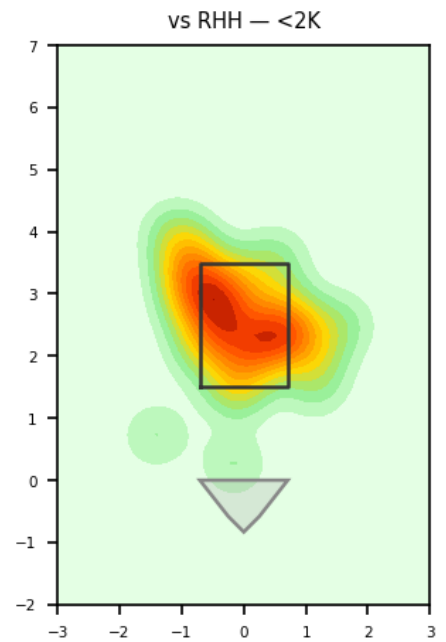
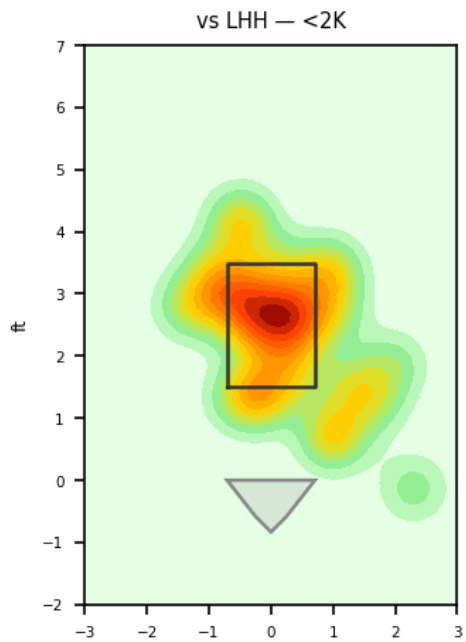




Location by Pitch Type & Count



Location by Handedness & Count



Splits vs LHH

Pitch	Count	%	Velo	Spin	IVB	HB	Whiff%
Slider	16	44.4%	84.3	2501.0	0.0	6.9	66.7%
Four-Seam	10	27.8%	90.7	2114.0	13.7	-5.1	-
Sinker	6	16.7%	90.8	2124.0	10.8	-13.2	-
Changeup	3	8.3%	86.1	1794.0	6.6	-8.5	100.0%
Curveball	1	2.8%	81.0	2719.0	-7.4	9.3	100.0%

Splits vs RHH

Pitch	Count	%	Velo	Spin	IVB	HB	Whiff%
Four-Seam	15	35.7%	91.1	2128.0	13.0	-5.9	40.0%
Sinker	13	31.0%	90.6	2110.0	10.6	-12.7	25.0%
Slider	7	16.7%	83.6	2511.0	-0.8	7.6	-
Changeup	6	14.3%	84.8	1814.0	5.6	-10.9	-
Cutter	1	2.4%	89.1	1973.0	11.9	-0.9	-

Advanced Pitching (TrackMan)

Stat	Value	Stat	Value
Pitches	78	Games	1
Avg Velo	88.0 mph	Max Velo	92.1 mph
Avg Spin	2202.0 rpm	Extension	5.9 ft
IVB	7.5 in	HB	-3.9 in
Whiffs	9	BIP	23
Avg Exit Velo	80.8 mph	Dates	2026-04-19 to 2026-04-19

Pitch Mix

Pitch Type	Count	Avg Velo	Max Velo	Avg Spin	IVB	HB	Whiffs	BIP
Four-Seam	25	90.9	91.9	2122.0	13.3	-5.6	2	7
Slider	23	84.1	88.3	2504.0	-0.2	7.1	4	5
Sinker	19	90.7	92.1	2115.0	10.7	-12.8	1	8
Changeup	9	85.2	86.7	1807.0	5.9	-10.1	1	3
Curveball	1	81.0	81.0	2719.0	-7.4	9.3	1	0
Cutter	1	89.1	89.1	1973.0	11.9	-0.9	0	0

Traditional Pitching (API)

Stat	Value	Stat	Value
W-L	1-0	ERA	0.0
G/GS	1/1	SV/HD	0/0
IP	5.0	H/ER/HR	2/0/0
K/BB	3/2	K/BB Ratio	1.5
WHIP	0.8	K/9	5.4
BB/9	3.6	BF	21